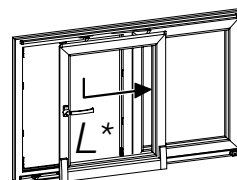
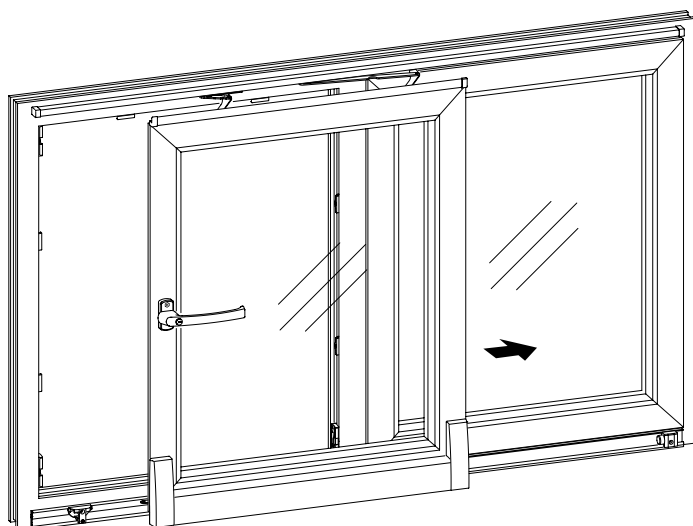
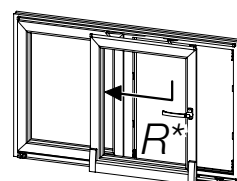


ATRIUM® SP komfort

Instruction for final assembly and adjustment GB



* HAUTAU version Left
= DIN EN 12519 Right
(right-opening)



* HAUTAU version Right
= DIN EN 12519 Left
(left-opening)

All figures within this document refer to HAUTAU version Left (DIN EN 12519 Right).

For assembling the HAUTAU versions Right (DIN EN 12519 Left) measures have to be applied mirrored.

Notes:

- These instructions are intended for installation personnel for final assembly and adjustment of parallel-slide-fitting-elements with HAUTAU ATRIUM® SP komfort fitting system.
- More documentation to parallel-slide-fittings ATRIUM® SP komfort: www.hautau.de
- **Before start-up, the fitting parts are to be greased** acc. to Maintenance and operating instructions (item code: 235873).

Contents

	page		page
Important information	2	Alignment guide block bottom, Alignment of support arms	6
Remove covers, Hang out sash	3	Alignment guide block top, Setting of sash closing pressure	7
Hanging sash, Cover installation	4	Vertical section	8
Horizontal sash alignment	5		

Important information

Intended use

Parallel-slide-fittings ATRIUM® SP komfort are intended for use only in stationary buildings. They are used for the horizontal opening and closing of windows and window doors. The parallel-slide-fitting-elements must be installed perpendicularly, and under no circumstances may they be in a skewed position.

Prerequisite

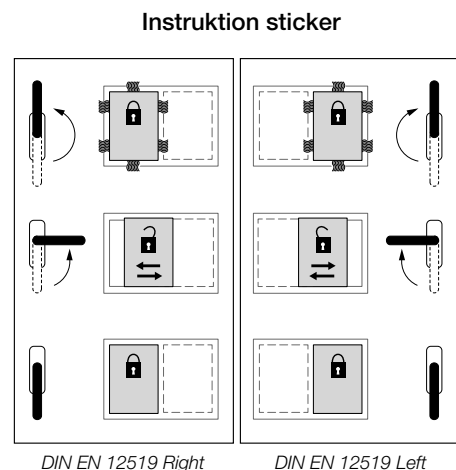
- These installation instructions and the installation of the fittings demand specialist knowledge corresponding to successfully completed training in at least one of the following trades: construction carpenter, construction metal worker, window and glass facade installer.
- **Under all circumstances comply with the handling guidelines of the profile manufacturer.**
- Parallel-slide-elements may be surface-treated only **before** the installation of the fitting parts.
Subsequent surface treatment may have a negative effect on the operability of the fitting parts.
In this case, all guarantee claims against the fitting manufacturer are nullified.
- The steel component parts described in these installation instructions have been passivated and sealed as per DIN EN 12329 using a colourless process. They must not be used in environments with aggressive and corrosive air components.
- Keep the runner rail and all rebates free of deposits and contamination, in order to avoid damage to the fitting and to ensure optimum functioning. **In particular, protect the fitting from cement or plaster residues.**
- Do not use acid-curing sealants, as these can result in corrosion of the fitting parts.
- Use acid- and solvent-free oils and greases, only.
- Avoid directly exposing the fitting to moisture, and prevent acid-containing cleaning agents from coming into contact with the fitting.
- The installing party shall be responsible for the adherence to the functional dimensions given in these mounting instructions and workshop drawing as well as for a perfect installation of the fittings and safe attachment of all components.

Safety

- Do not open or disassemble the individual fitting parts (especially the stay system and power storage unit).
Failure to comply with these instructions can result in bodily **injuries**. Send defective fitting parts back to the factory.

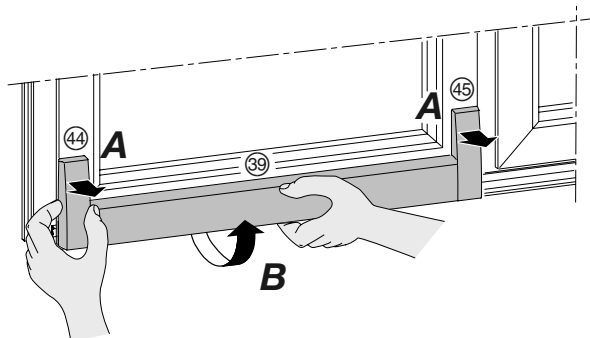
User information

- Hand out product together with maintenance and operating instructions to end-user (Item-Code: 235873).
- Chose a clearly visible position at installed window sash for instruction sticker (sliding direction DIN left and DIN right). For HAUTAU central locking: instruction sticker can be found in box “Corners for ATRIUM® SP komfort”.
- **Please comply with the “Requirements/instructions on the product and on liability (VHBH)”. Please inform the end-user about the content of the “Requirements/instructions for end-users (VHBE)”.**
- Keep these installation instructions in a safe place.

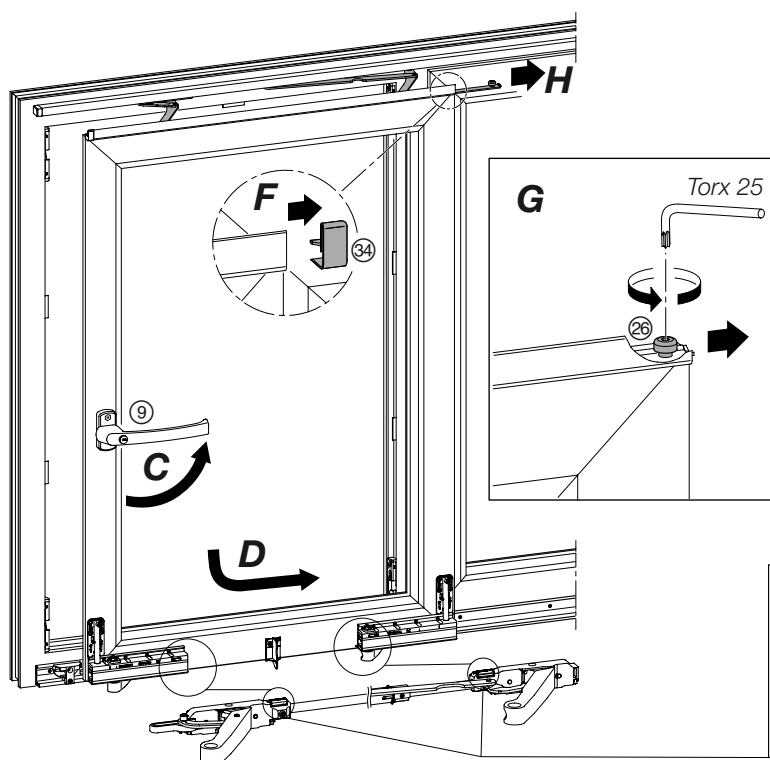


All measurements in these instructions are indicated in millimetres (mm).

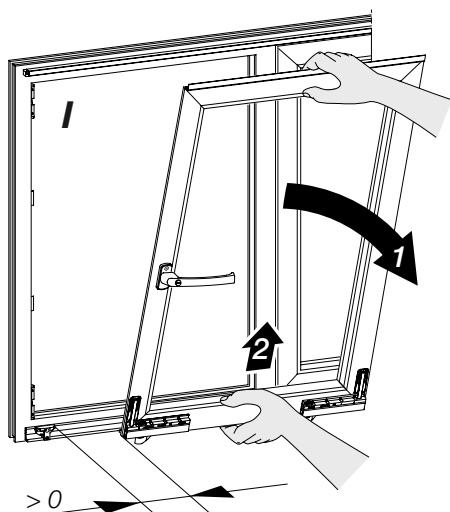
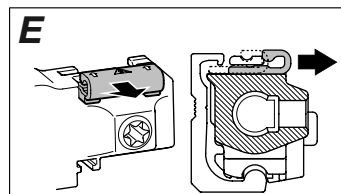
Remove covers, Hang out sash



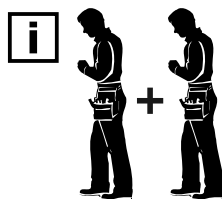
- A** Remove cover caps 44/45 from support arms by pulling it forward.
- B** Drag cover profile 39 diagonally from bottom to top.
Info: Drag powerful with both hands and fingers behind the profile.



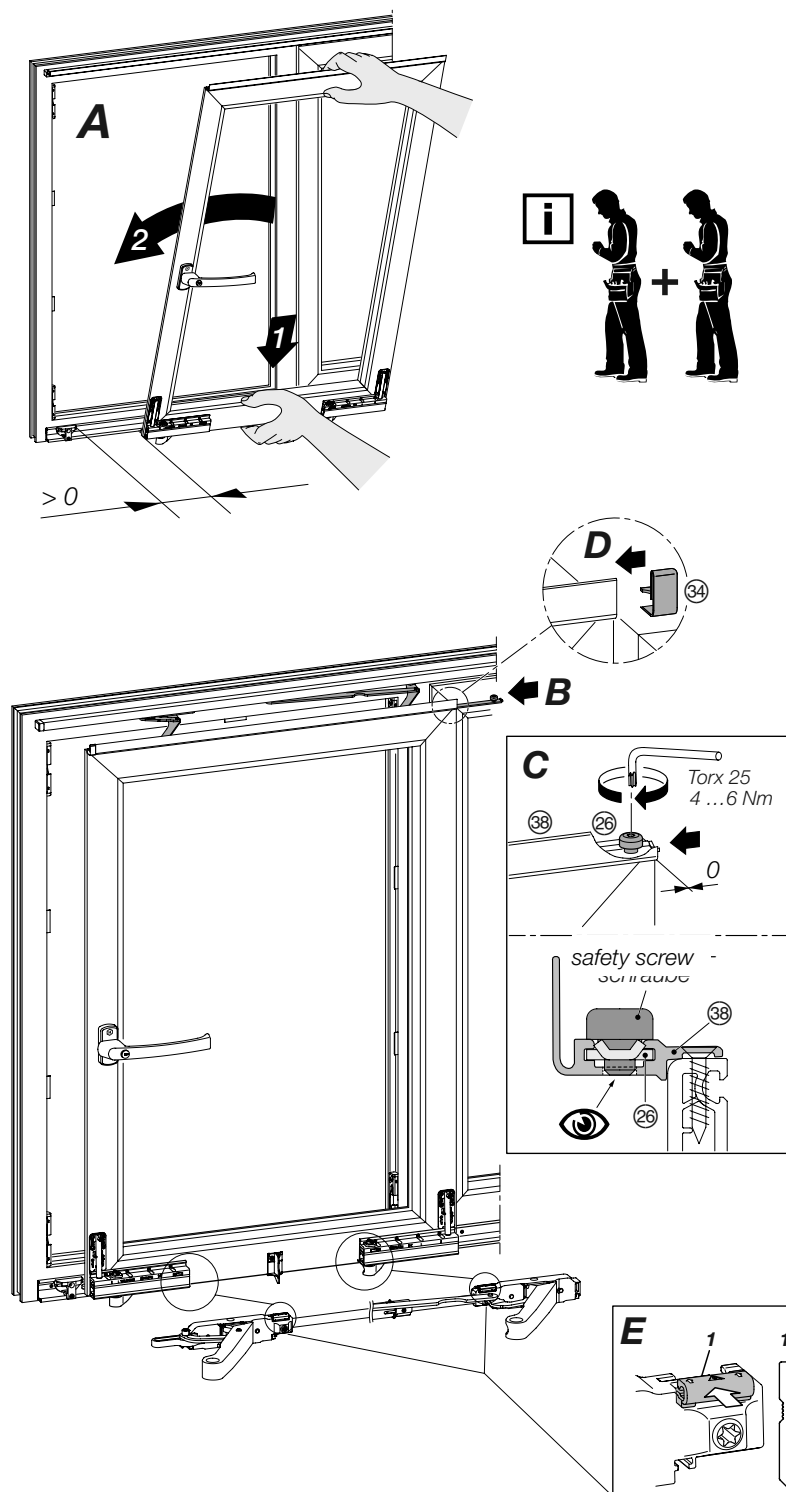
- C** Turn handle 9 in sliding position.
- D** Open sash.
- E** Remove anti-twist protections of both bogies.
- F** Remove cover cap for stay connecting profile right 43.
- G** Loosen safety screw (Torx 25).
- H** Pull out stay system 26.
Attention: Hold sash!



- I** Tilt sash to front and lift it from bottom track.



Hanging sash, Installation of covers



A Bring handle in slide position. Lift sash slightly in oblique position and place it together with bogie rollers on front edge of guide track. Check position of rolls by sliding the sash and adjust, if necessary.

B Push stay system ②⑥ into stay connecting profile

C Put sliding track in flush position with sash border and tighten safety screw (Torx 25; 4 ... 6 Nm).

⚠ Warning: The safety screw **must be positive fitted** into the hole of the stay connecting profile ③⑧. If you could not see the screw, the sash is not sufficiently secured. Severe injuries could be the consequence.

D Attach cover cap for stay connecting profile right ③④.

E Move bogie safety device (1) of both bogies backwards until they engage in position as shown (2).


⚠ Warning: If the bogie safety device has not locked correctly or not locked at all in position (2) as shown, the sash is not sufficiently secured (3). Severe injuries could be the consequence.

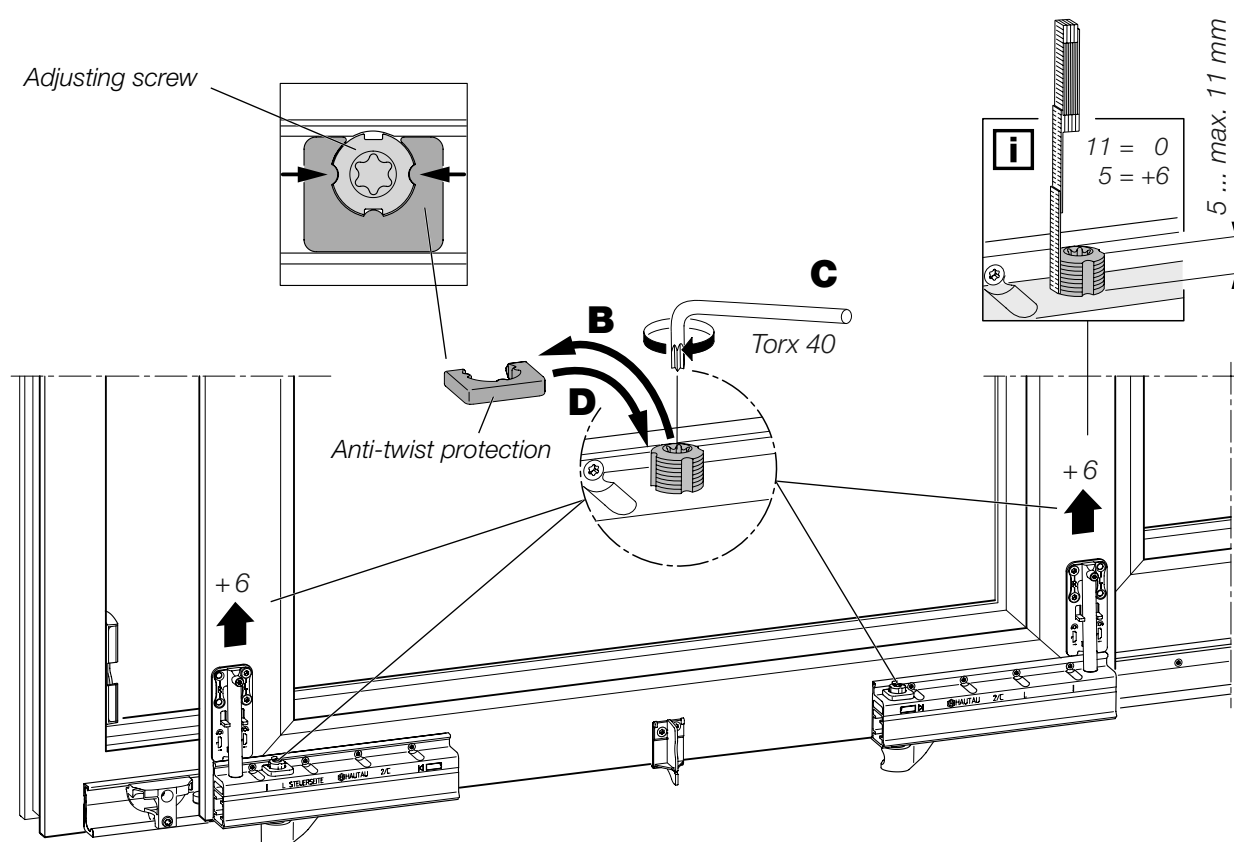
F Align cover profile ③⑨ and clip on the bogie-profiles as well as on the cover fillet support(s).

G Clip cover caps ④④/④⑤ onto support arms.

Horizontal sash alignment

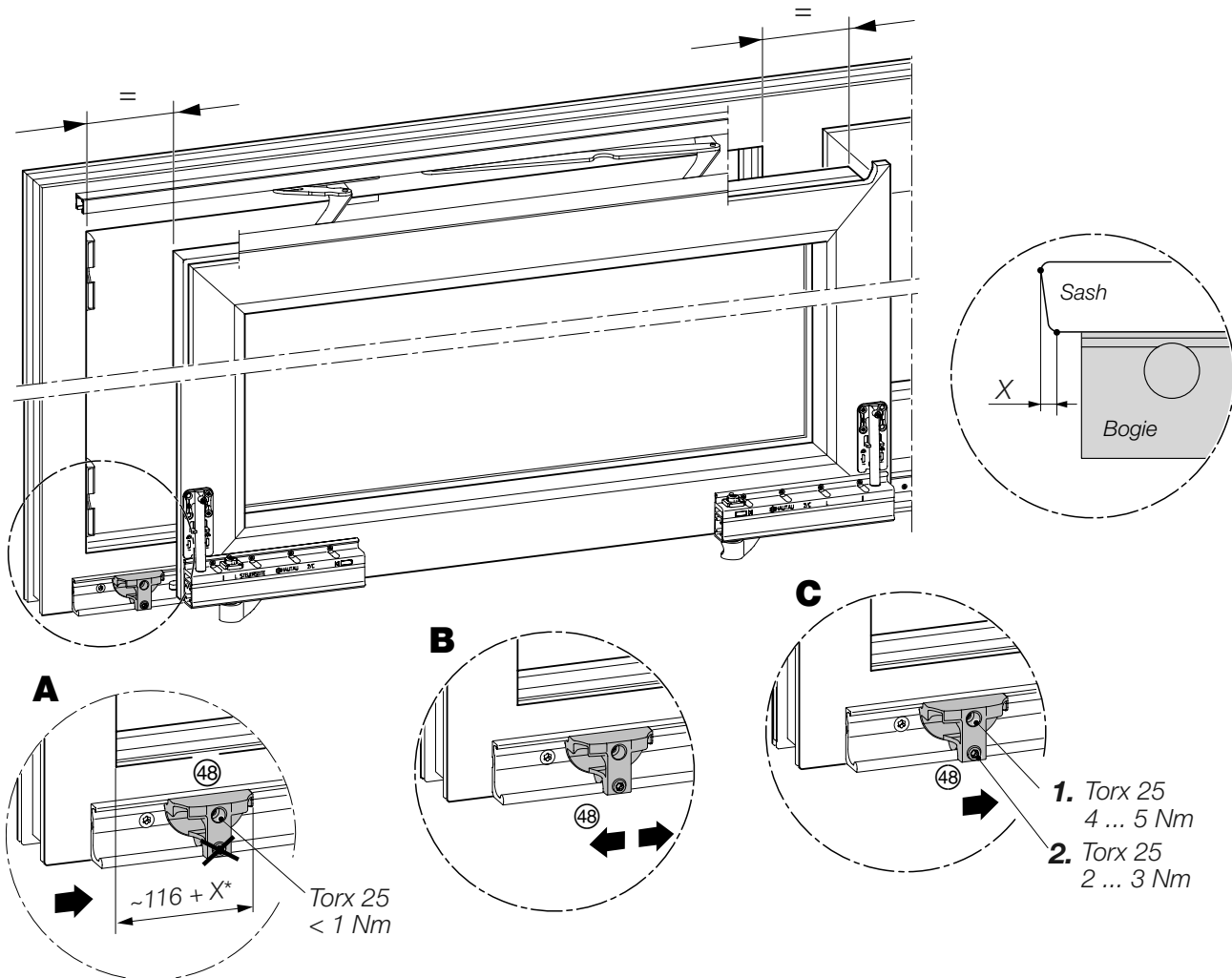
Horizontal sash alignment

- A** Check fittings cavity top and bottom on both sides (not shown).
- B** Remove anti-twist protections.
- C** Lift bogies (Torx 40) by means of adjusting screws in order to align sash.
Note: If the height of the bogies is set to different levels, the guide block top (stay system) must be realigned (see page 7). The adjusting screws are allowed to be turned out **max. 11 mm**.
-  **Attention:** If the adjusting screws are turned out more than 11 mm, the bogies will be destroyed.
- D** Put anti-twist protections on adjusting screws; at first, correct orientation of adjusting screws, if necessary.



Alignment guide block bottom, Alignment of support arms

- A** Set guide block ④⑧ on handle side at a distance of approx. 121 mm + X from outer edge of bottom track. At first tighten it slightly with the upper screw (Torx 25, <1 Nm).
- B** Put sash in slide position and check fittings cavity on both sides (12 mm). Reset guide block, if necessary.
- C**
 1. Tighten upper screw firmly at guide block (Torx 25, 4 ... 5 Nm).
 2. Then tighten bottom screw (Torx 25, 2 ... 3 Nm).

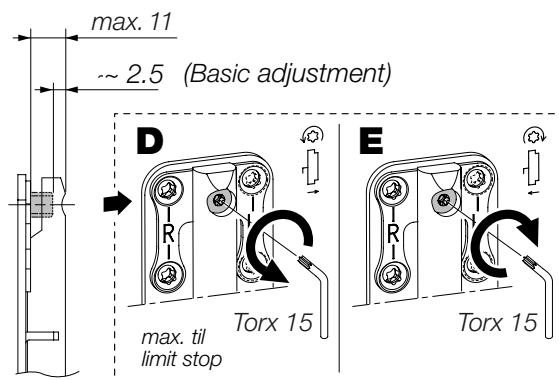


Alignment of support arms

(to achieve optimum for easy sash entry into frame)

- D** To ease entry of sash.
- E** To ease opening of sash.

i Important note: Both support arms have to be adjusted in the same way in direction **D** only (coming from basic adjustment). If adjustment in direction **D** is too heavy, depending on profile and sash weight, dragging bogies may occur. In this case drive the screw back acc. **E**, until the bogies run correct.



Alignment guide block top, Setting of sash closing pressure

Alignment of guide block top

(to parallel running of the sash into the frame)

- D** Slide the sash towards the guide block, bottom (48) as shown in **fig.1** until the control pin of the 'master bogie' (on handle side) is in contact with the entry curve, but is NOT yet sliding in.
- E** Slide the guide block, top (48a), into the track until it reaches the control pin of the stay system (**fig. 2**). Slightly tighten the screws (Torx 25) of the guide block.
- F** Put sash in "closed position" and check fittings cavity on both sides (12 mm). Reset guide block, if necessary (no illustration).
- G** Tighten both screws of the guide block firmly (Torx 25, 3 ... 4 Nm).

fig.2

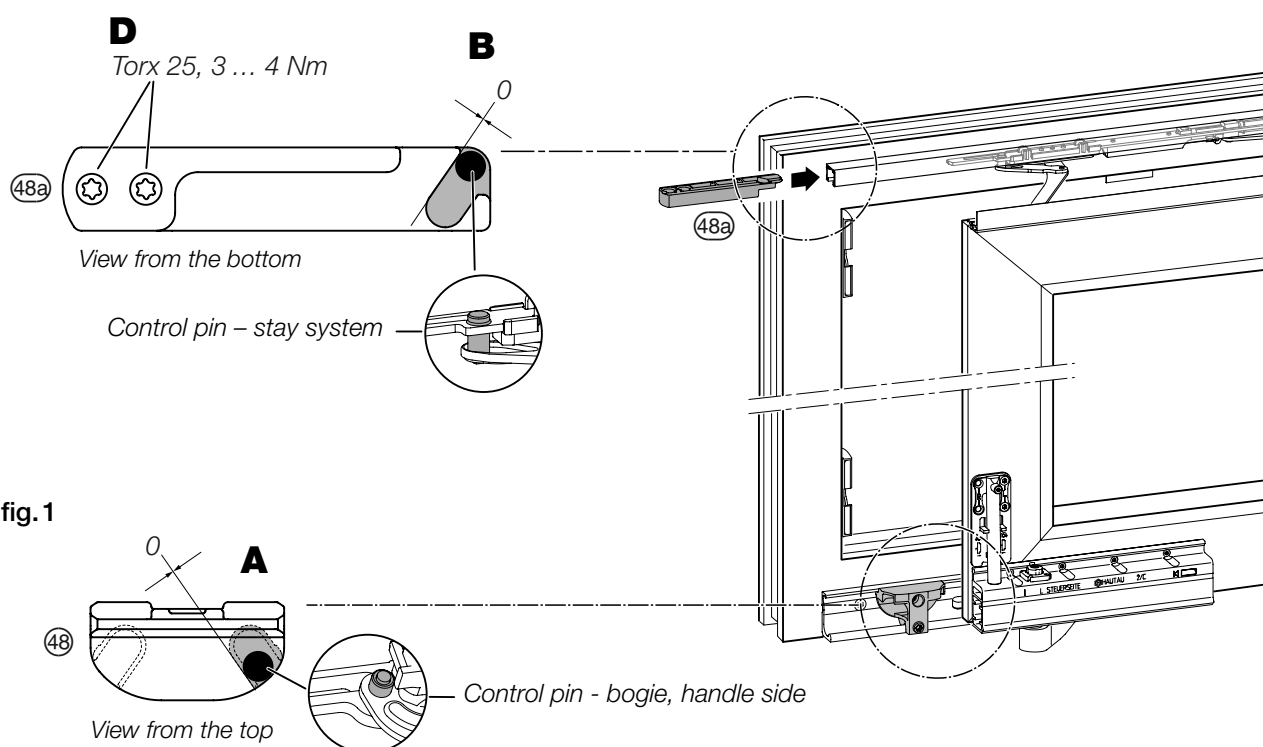
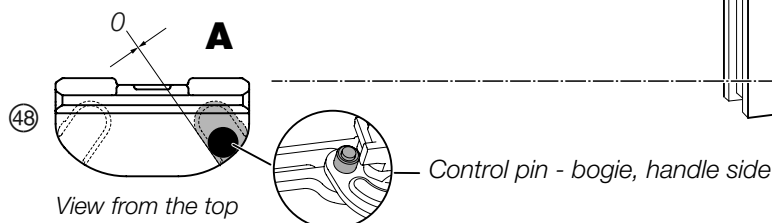
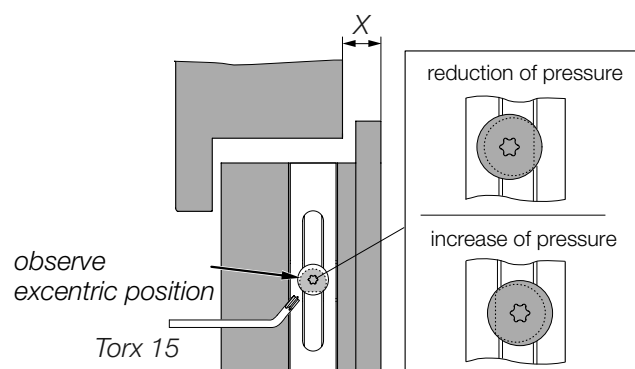


fig.1

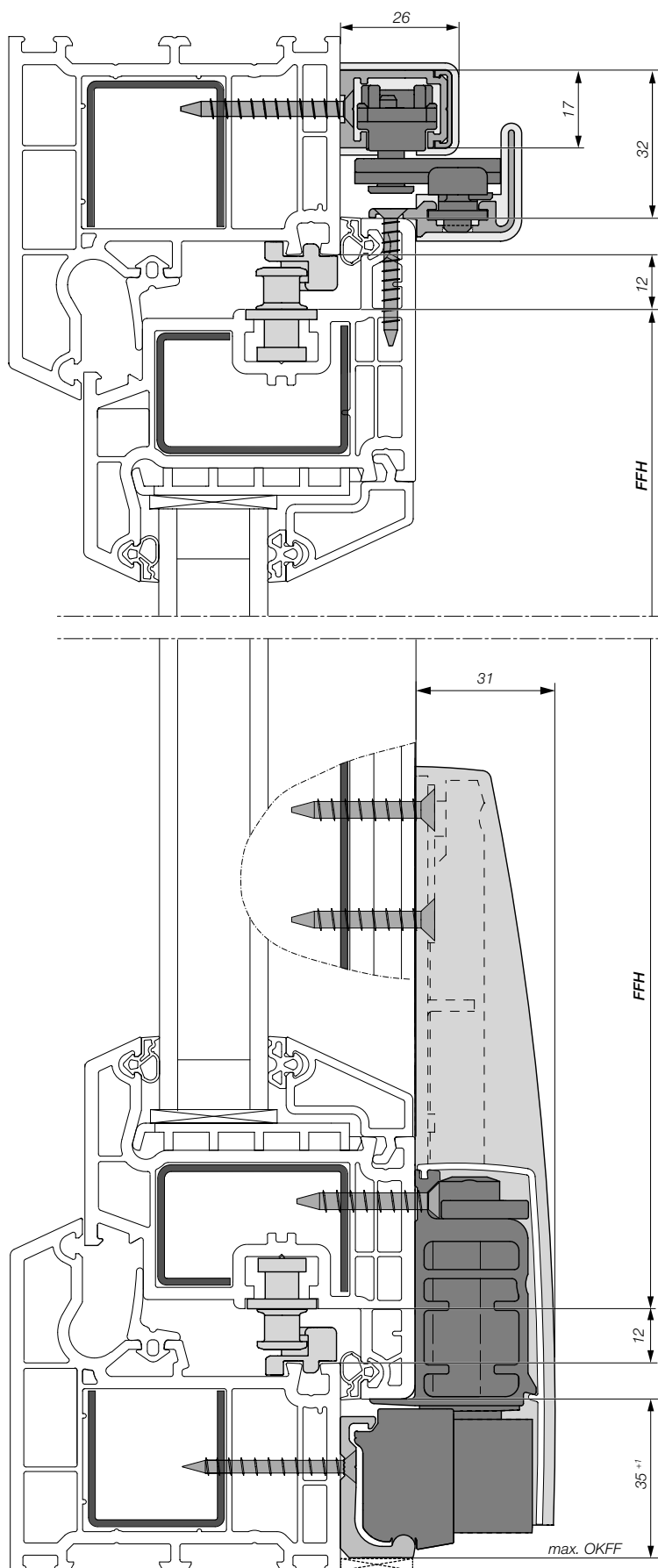


Setting of sash closing pressure (Overrebate height)

Check closing behaviour of sash.
Set of sash closing pressure: adjust overrebate height (X) by means of Torx 15.



Notes



No scale